



**Asking Price £370,000 Leasehold**

**2 Bedroom, Apartment - Retirement**

31, Tatterton Lodge York Road, Wetherby, Yorkshire, LS22 7AA

 0800 077 8717

 [sales@churchillsl.co.uk](mailto:sales@churchillsl.co.uk)

 [churchillsl.co.uk](http://churchillsl.co.uk)

**Churchill**  
Sales & Lettings  
Retirement Property Specialists

# Tatterton Lodge

Tatterton Lodge is a delightful development of 55 one and two bedroom apartments located in the charming historic town of Wetherby, centrally located between Leeds, York and Harrogate.

Wetherby's rich heritage owes much to its location being a half way staging post between London and Edinburgh on the old Great North Road, which used to run directly through the town; many of the coaching Inns established during that time are still there to enjoy today. Having been granted a Royal Charter in 1240, the town has always been a popular place to live and visit. The 13th century medieval bridge remains a prominent feature of the town and there are many delightful riverside walks and the Turner Trail to enjoy a stroll.

Nestling in the heart of Yorkshire's Golden Triangle of Leeds, York and Harrogate, Wetherby is ideally located for trips to these major cities to visit the shops and explore the many visitor attractions or enjoy days out to the Yorkshire Dales, the North Yorkshire Moors and the East coast. Wetherby racecourse, Harewood House and the delightful parks of Stockeld and Roundhay are nearby and the town centre has various shops, restaurants and eateries.

Wetherby is well served by regular public bus services with bus stops ideally located just outside Tatterton Lodge; in addition the main bus station is located in the market place. The town is also within easy reach of major road networks and served by Leeds Railway Station and Leeds Bradford International Airport catering for a variety of journeys.

Tatterton Lodge's manager is on hand throughout the day to support the Owners and keep the development in perfect shape as well as arranging events such as movie nights to strawberry and cream afternoons, board games, music evenings, fitness classes and birthday celebrations.

A Guest Suite is available for your friends and family to stay in. In addition, you are entitled to use the Guest Suites at all Churchill Living developments across the country. Prices are available from the Lodge Manager.

Tatterton Lodge has been designed with safety and security at the forefront, all apartments and communal areas have an emergency Careline system installed, monitored by the onsite Lodge Manager during the day and 24 hours, 365 days a year by the Careline team. A Careline integrated intruder alarm, secure video entry system and sophisticated fire and smoke detection systems throughout both the apartment and communal areas provide unrivalled peace of mind.

Tatterton Lodge is managed by the award winning Churchill Estates Management, working closely with Churchill Living and Churchill Sales & Lettings to maintain the highest standards of maintenance and service for every lodge and owner.

Tatterton Lodge requires at least one apartment resident to be over the age of 60 with any second resident over the age of 55.



# Property Overview

DRAFT PARTICULARS - Awaiting verification from the seller

**\*\*TWO BEDROOM FIRST FLOOR RETIREMENT APARTMENT\*\***

Churchill Sales & Lettings are delighted to be marketing this fantastic two bedroom apartment in the popular development of Tatterton Lodge! The property provides spacious accommodation and is presented in very good order throughout. The apartment is also conveniently located near the Lift and Guest Suite.

The Living Room offers ample space for living and dining room furniture and benefits from a feature electric fire with attractive surround. This room is also complimented by two windows plus a bay window, that provide lots of natural light.

The Kitchen offers a range of modern eye and base level units with working surfaces over and tiled splashbacks. There is a built-in waist height oven, 4 ring electric hob, washer/dryer, fridge and freezer. There is space for a dining table, and a large window provides light and ventilation.

Bedroom One is a generous double with a built-in mirrored wardrobe plus an additional storage cupboard. An En-Suite offers a large, curved shower with handrail, a WC, wash hand basin with vanity unit beneath and a heated towel rail.

Bedroom Two is another good-sized double with a built-in wardrobe. This room could also be used as a separate Living Room, Study or Hobby Room.

The Bathroom offers a full-sized bathtub with overhead shower and a handrail, a WC, wash hand basin with vanity unit beneath and a heated towel rail.

Perfectly complimenting this wonderful apartment are three useful storage cupboards located in the hallway.

This apartment simply must be viewed!



# Features

- Two bedroom two bathroom first floor apartment
- Fully fitted kitchen with integrated appliances
- Lodge Manager available 5 days a week
- Owners' Lounge & Kitchen with regular social events
- 24 hour Careline system for safety and security
- Owners private car parking
- Landscaped gardens
- Westerly facing
- A Guest Suite is available for your friends and family to stay in. In addition, you are entitled to use the Guest Suites at all Churchill Living developments across the country. Prices are available from the Lodge Manager



# Key Information

Service Charge (Year Ending 31st May 2027): £4,899.86 per annum.

Ground Rent: £882.86 per annum. To be reviewed December 2030.

Council Tax Band D

125 year Lease commencing 2016

Please check regarding Pets with Churchill Estates Management. Any consents given in relation to pets are subject to the terms of the lease and any further rules and regulations made by Churchill Estates Management.

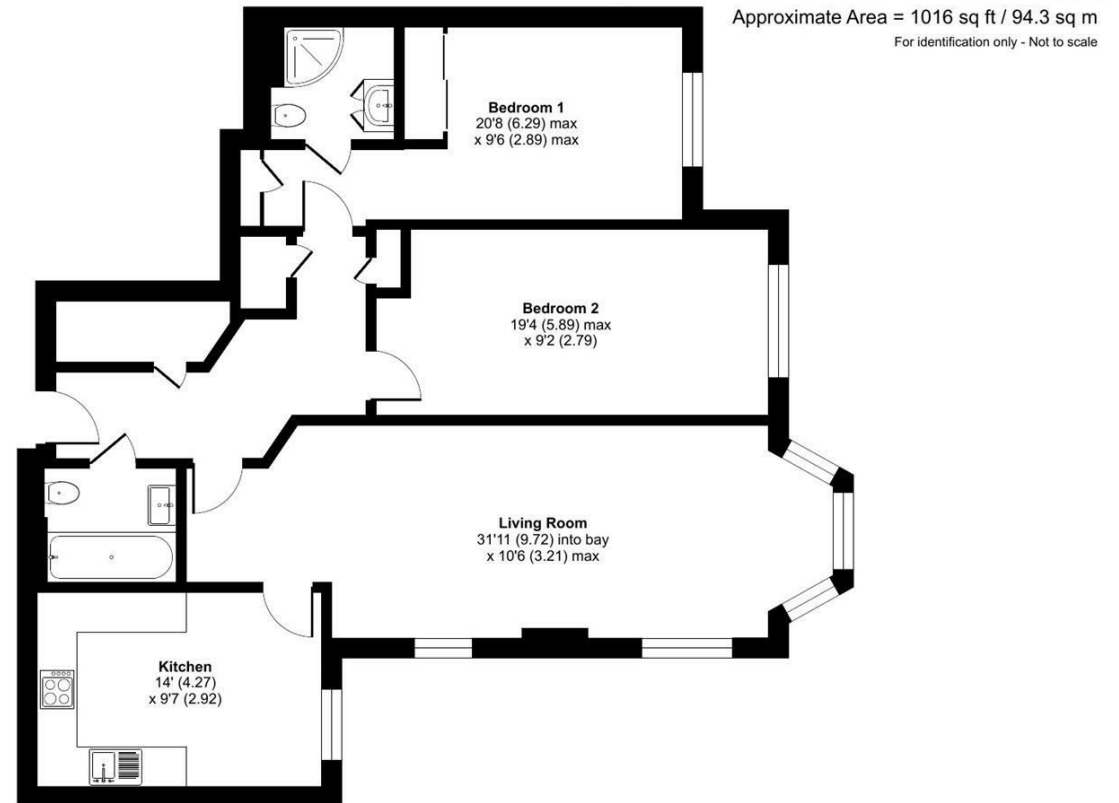
Service charges include: Careline system, buildings insurance, water and sewerage rates, ground source heating, communal cleaning, apartment heating, utilities and maintenance, garden maintenance, lift maintenance, lodge manager and a contribution to the contingency fund.

EPC Rating: B

DESCRIPTION Measurements are approximate and some may be maximum on irregular walls.

CONSENTS We have not had sight of any relevant building regulations, guarantees or planning consents. All relevant documentation pertaining to this property should be checked with your legal advisor before exchanging contracts.

Property Particulars Disclaimer: These particulars are intended only as general guidance. The Company therefore gives notice that none of the material issued or visual depictions of any kind made on behalf of the Company can be relied upon as accurately describing any of the Specified Matters prescribed by any Order made under the Consumer Protection from Unfair Trading Regulations, 2008. Nor do they constitute a contract, part of a contract or a warranty.



Floor plan produced in accordance with RICS Property Measurement 2nd Edition, incorporating International Property Measurement Standards (IPMS2 Residential), © n/checom 2026. Produced for Churchill Sales & Lettings Limited. REF: 1485972



☎ 0800 077 8717

✉ sales@churchillsl.co.uk

🌐 churchillsl.co.uk

**Churchill**  
Sales & Lettings  
Retirement Property Specialists